

ACTIVE INFRARED

THE AUTONOMOUS



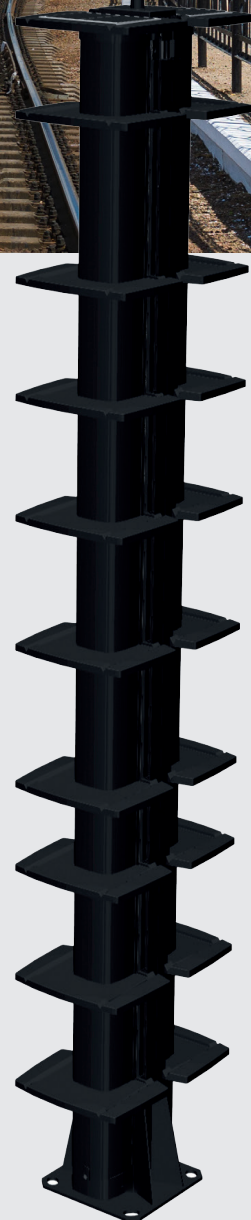
SOLARIS NG

HIGH PERFORMANCE AUTONOMOUS
ACTIVE INFRARED BARRIER NEW GENERATION

PERFORMANCE FEATURES

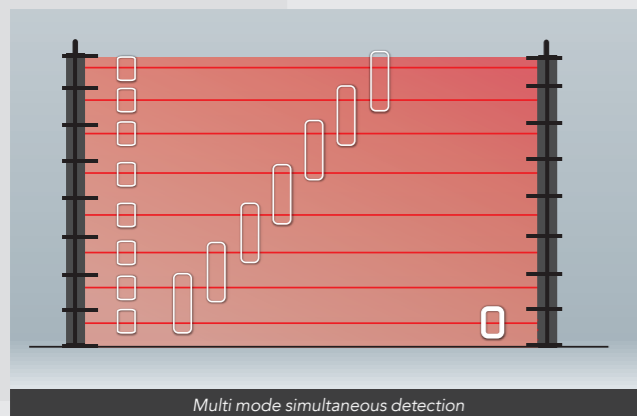
- **High reliability** of infrared
- **100% Stand-alone barrier:** easy to install
- **Solar Energy and battery:** no civil engineering
- **Secured and integrated radio communication**
- **MAXIBUS Universal compatible:** integration with VMS
- **New: Train filtering fonctionnalité, polyacetal housing option and configuration software**

NEW



HIGHLY RELIABLE INFRARED

- **35 years' experience** in infrared technology
- **Intruder size filtering using several simultaneous detection modes:** Standard modes, single detection, bottom beam mono-detection and dual-detection
- **Intruder speed filtering: alarm timing**
- Combination of the two filters: **reduction in number of unwanted alarms**
- **Autonomous barrier with a 100 m infrared range:** all-weather operation ensured by **anti-condensation and anti-frost caps** that (mechanically) prevent condensation and frost from building up on the column housing

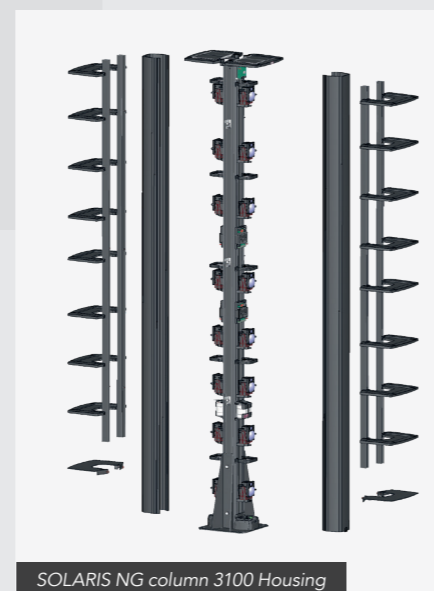


100% AUTONOMOUS

- **No civil engineering:** no cables
- Powered by **solar energy and battery**
- **Secured radio communication**

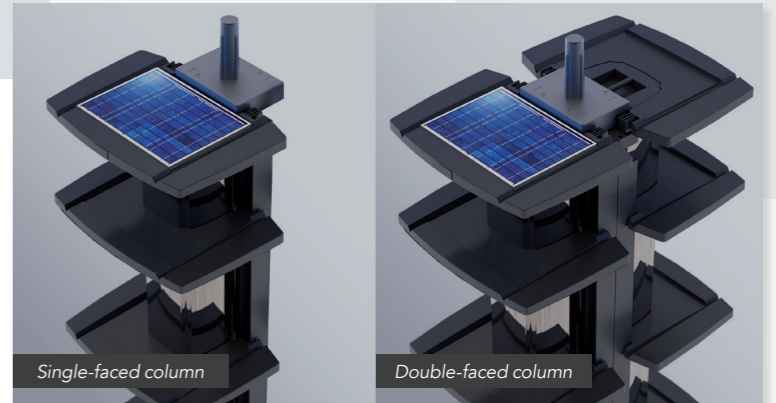
SECURED RADIO COMMUNICATION

- **Native radio**
- **Private LoRa®** radio communication
- **Encrypted radio network:** data securing
- **Meshed radio network** that guarantees a robust installation
- **Integrity and security of the site:** permanent control of the presence of each column in the network (watchdog function)
- **Radio range:** 300 m direct line of sight range



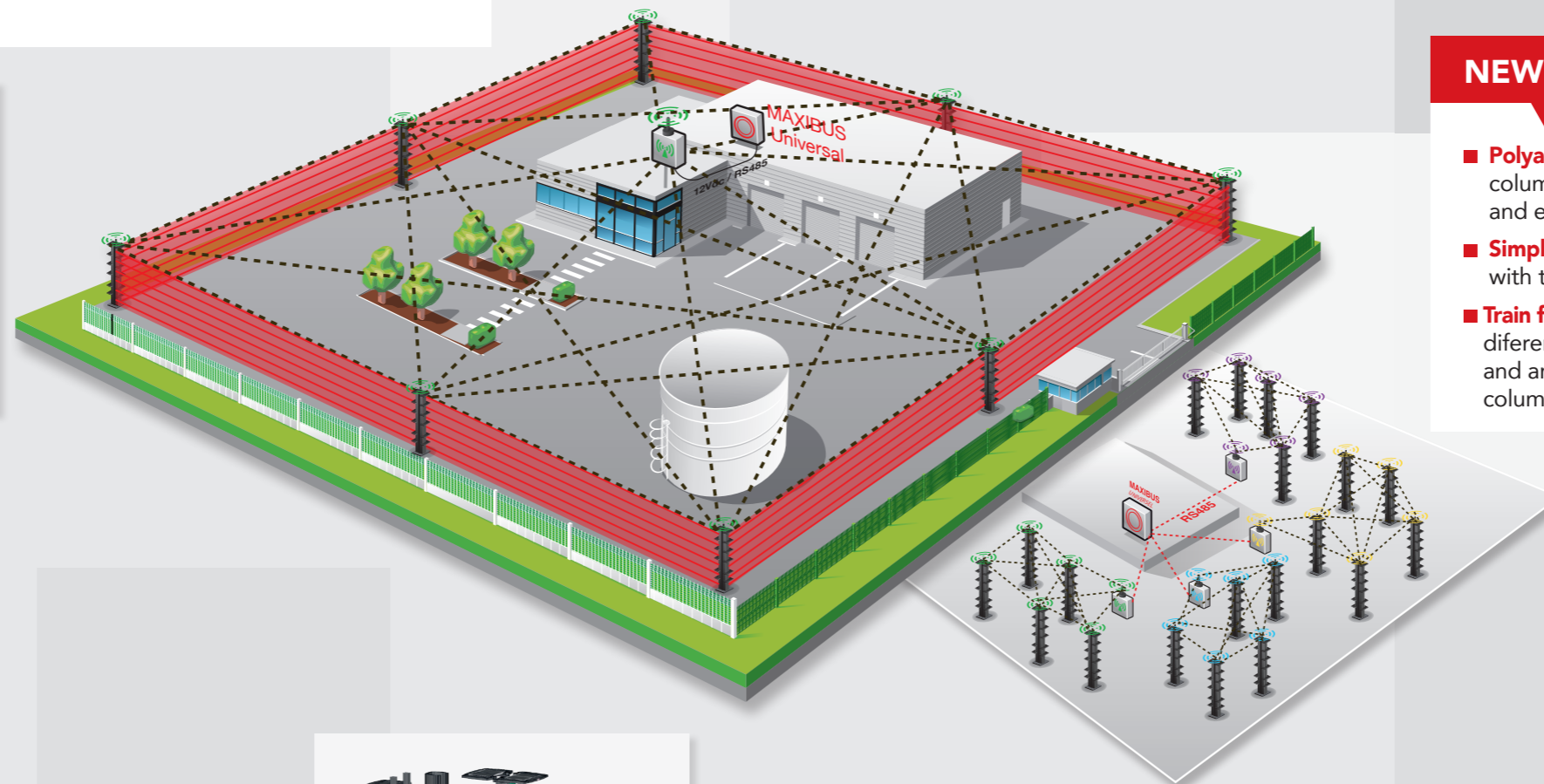
SOLAR ENERGY

- **Solar panel** with no specific orientation required
- **2 months** of battery **autonomy** in complete darkness before the low-battery alarm is triggered
- **Tampered** solar panels and integrated anti-support cap



NEW FEATURES

- **Polycetal housing option** for a 100% plastic column to secure specific sites such as airports and electricity transformer stations
- **Simplified configuration and maintenance** with the configuration software
- **Train filtering functionality:** the algorithm can differentiate between a vehicle (train or metro) and an individual passing between two infrared columns



MAXIBUS UNIVERSAL COMPATIBLE

OPTIMISED ALARM MANAGEMENT...

- **Centralisation of all system alarms** to a single point
- **Remote access to products:** configuration and maintenance
- **Embedded** web server
- **Time and date stamped history** of alarm events

...DESIGNED FOR SIMPLIFIED INTEGRATION ON ALL YOUR SITES

- **Integration with VMS**
- **Easy integration:** API available
- **Secure** data transmission: **802.1X**, TLS...
- **Various** alarm transmission **protocols:** ModBus, API
- **Dry contact** outputs: up to 136 relays

TECHNICAL CHARACTERISTICS

	SOLARIS NG COLUMNS		
Housing	3100		
Column heights	2 m	2.5 m	3 m
Plastic column optional	Polyacetal housing available: frangible column, 100% plastic NEW		
Maximum outdoor IR range in all weather conditions	100 m		
Maximum number of cells per direction	Up to 10 cells		
Detection mode	Multiplexing with optical synchronisation: Mono-detection / Bottom beam mono-detection / Dual-detection		
Power supply	Solar panel and integrated battery in each column		
Alarm information	Intrusion / Disqualification / Tamper / Anti-climbing cap / Low default battery / Radio loss		
Alarm transmission	Dynamic radio mesh network to radio coordinator		
Advanced feature	Train filtering functionality available NEW		
Alignment assistance tools	Audio and visual signals on all columns		
Operating temperature	From -40°C to +70°C		
Electromagnetic compatibility	Compliant with European standards (CE label) and to the highest international standards NEW		

	RADIO COORDINATOR
Radio range	300 m
Alarm transmission	RS485 compatible with MAXIBUS Universal
Radio frequency	Bandwidth 868MHz, LoRa modulation, 19 selectable channels
Power supply	12 Vdc
Operating temperature	From -40°C to +70°C
Compatibility	Radio network compatible with PIRAMID detectors and the 8 input module MI8 NEW

	MAXIBUS UNIVERSAL HUB
Configuration tools	Embedded web server
Alarm outlets	From 8 to 136 dry contacts / Modbus / PLC outputs
4 communication ports	Can handle 4 radio networks simultaneously (4 radio coordinators), i.e. 96 SOLARIS columns (4 x 24 columns)
Power supply	12 Vdc
Operating temperature	From 0°C to +55°C
Security	Compatible networks 802.1X and TLS